

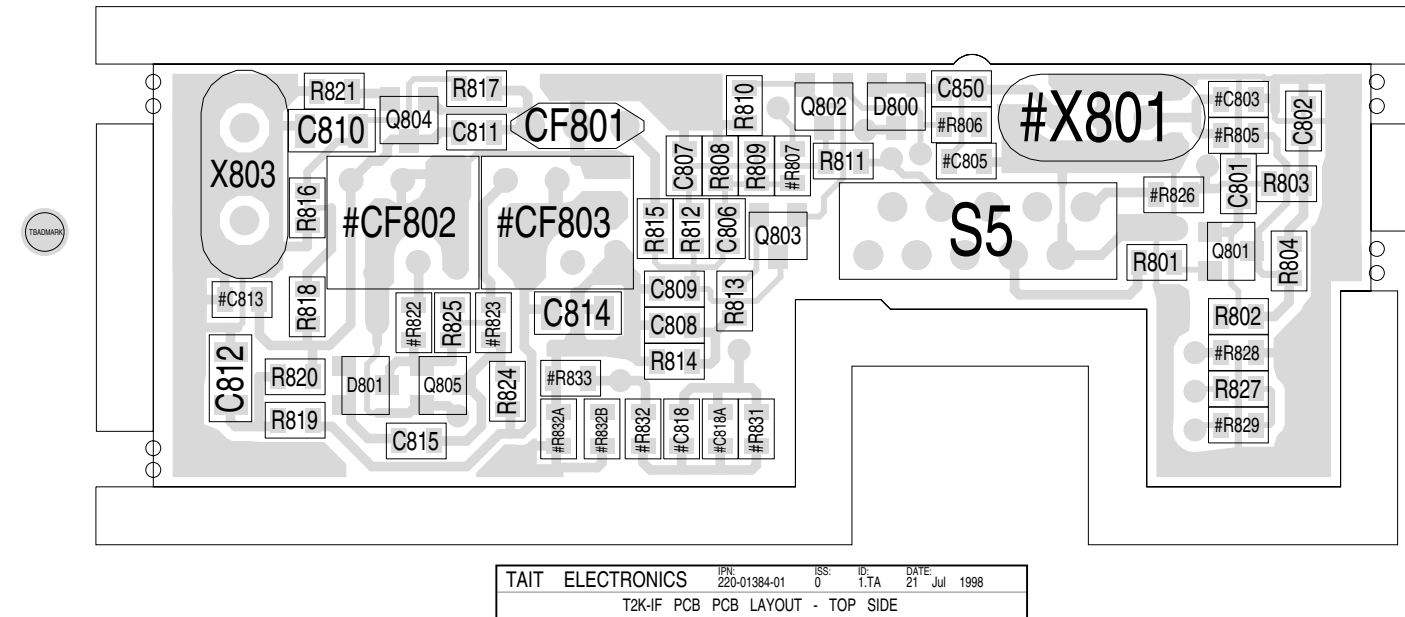
Parts List

Ref	IPN	Description
#C803	015-20050-02	CAP 0805 0P5 +/-0.1P NPO 50V
#C805	015-20050-02	CAP 0805 0P5 +/-0.1P NPO 50V
#CF802	276-00010-64	FLTR CER 455KHZ 15KHZ B/W
#CF803	276-00010-64	FLTR CER 455KHZ 15KHZ B/W
C801	015-24470-08	CAP CER 0805 4N7 10% X7R 50V
C802	015-25100-08	CAP CER 0805 10N 10% X7R 50V
C806	015-23470-08	CAP CER 0805 470P 10% X7R 50V
C807	015-25100-08	CAP CER 0805 10N 10% X7R 50V
C808	015-25100-08	CAP CER 0805 10N 10% X7R 50V
C809	015-21560-02	CAP 0805 5P6 1% NPO 50V
C810	015-05220-08	CAP CER 1206 22N 10% X7R 50V
C811	015-21680-02	CAP 0805 6P8 +/-0.1P NPO 50V
C812	015-05220-08	CAP CER 1206 22N 10% X7R 50V
C814	015-05220-08	CAP CER 1206 22N 10% X7R 50V
C815	015-24100-08	CAP CER 0805 1N 10% X7R 50V
C850	015-25100-08	CAP CER 0805 10N 10% X7R 50V
CF801	276-00010-17	FLTR CER 10.7MHZ +/-50KHZ B/W
D800	001-10000-17	DIODE SMD DUAL BAT-17 SOT23
D801	001-10000-99	DIODE SMD BAV99 D-SW SOT23
Q801	000-10008-94	XSTR SMD BFS19 NPN RF SOT23
Q802	000-10008-94	XSTR SMD BFS19 NPN RF SOT23
Q803	000-10008-94	XSTR SMD BFS19 NPN RF SOT23
Q804	000-10008-94	XSTR SMD BFS19 NPN RF SOT23
Q805	000-10008-94	XSTR SMD BFS19 NPN RF SOT23
R801	036-12390-00	RES M/F 0805 39E 5%
R802	036-16100-00	RES M/F 0805 100K 5%
R803	036-12560-00	RES M/F 0805 56E 5%
R804	036-14100-00	RES M/F 0805 1K 5%
#R805	036-14220-00	RES M/F 0805 2K2 5%
#R806	036-13330-00	RES M/F 0805 330E 5%
#R807	036-15220-00	RES M/F 0805 22K 5%
R808	036-15390-00	RES M/F 0805 39K 5%
R809	036-15330-00	RES M/F 0805 33K 5%
R810	036-14560-00	RES M/F 0805 5K6 5%
R811	036-13100-00	RES M/F 0805 100E 5%
R812	036-13390-00	RES M/F 0805 390E 5%
R813	036-12220-00	RES M/F 0805 22E 5%
R814	036-13390-00	RES M/F 0805 390E 5%
R815	036-13270-00	RES M/F 0805 270E 5%
R816	036-15100-00	RES M/F 0805 10K 5%
R817	036-13470-00	RES M/F 0805 470E 5%
R818	036-15470-00	RES M/F 0805 47K 5%
R819	036-14100-00	RES M/F 0805 1K 5%
R820	036-14150-00	RES M/F 0805 1K5 5%
R821	036-12220-00	RES M/F 0805 22E 5%
#R822	036-13680-00	RES M/F 0805 680E 5%
#R823	036-13470-00	RES M/F 0805 470E 5%
R824	036-14220-00	RES M/F 0805 2K2 5%
R825	036-16180-00	RES M/F 0805 180K 5%
#R826	036-15470-00	RES M/F 0805 47K 5%
R827	036-17100-00	RES M/F 0805 1M 5%
#R828	036-14100-00	RES M/F 0805 1K 5%
#R829	036-16220-00	RES M/F 0805 220K 5%
#R831	036-15470-00	RES M/F 0805 47K 5%
#R832	036-12100-00	RES M/F 0805 10E 5%
#R832B	036-10000-00	RES M/F 0805 ZERO OHM
#R833	036-15390-00	RES M/F 0805 39K 5%
S5	240-02010-76	SKT 10W M-MATCH SIDE ENTRY PCB
#X801	276-00010-35	FLTR XTAL 10.7MHZ 12KHZ 2 POLE
X803	274-00010-40	XTAL 10.245MHZ TE-40 AT-51

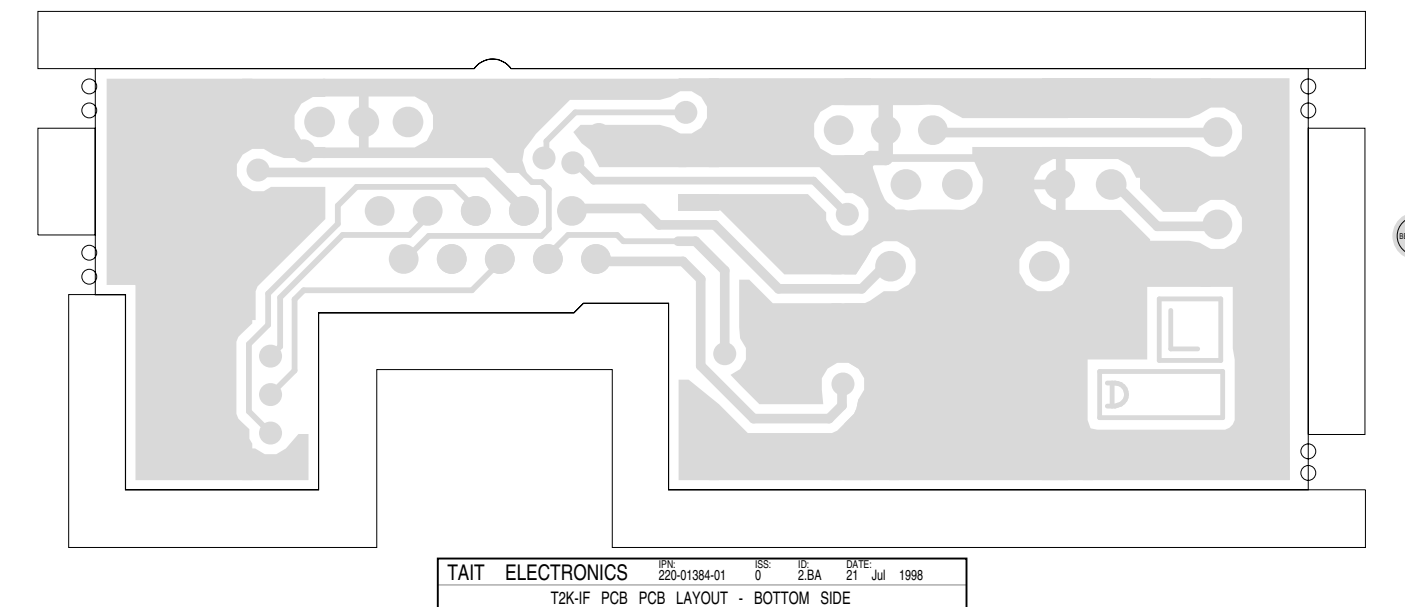
Mechanical and Miscellaneous Parts

IPN	Description
220-01384-01	PCB T2000 SII IF BOARD
365-00100-09	LABEL WHITE VINYL 15X11MM S/A
369-02050-00	TAPE SA TESAMOLL 6*3MM 25M ROL

PCB Layout – Top Side



PCB Layout – Bottom Side



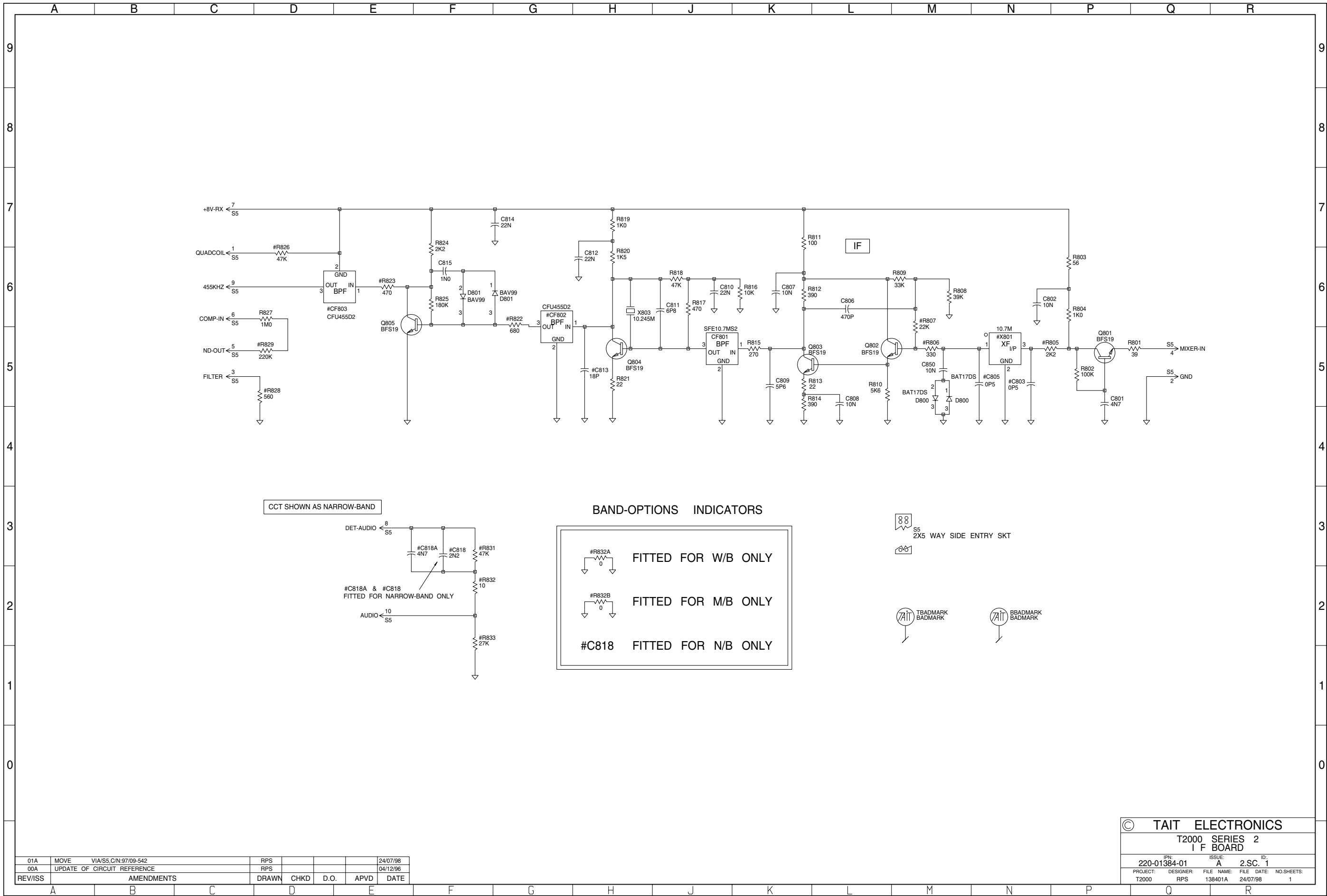
PCB Information Pack
Tait T2000

PCB Layout IF PCB
Parts List 220-01384-01
IPN 403-01384-01

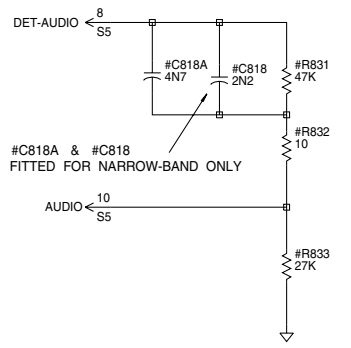
Parts List Amendments

This document can be printed on A3 as single-sided, double-sided, unfolded or z-folded.

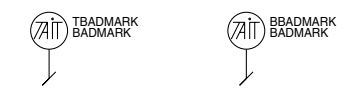
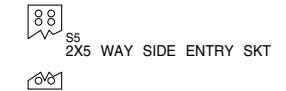
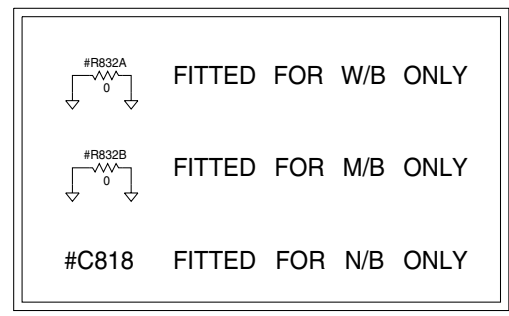




CCT SHOWN AS NARROW-BAND



BAND-OPTIONS INDICATORS



01A	MOVE	VIA/S5.C/N:97/09-542	RPS			24/07/98
00A	UPDATE OF	CIRCUIT REFERENCE	RPS			04/12/96
REVISS	AMENDMENTS		DRAWN	CHKD	D.O.	APVD
						DATE

© TAIT ELECTRONICS			
T2000 SERIES 2			
I F BOARD			
IPN:	ISSUE:	FILE NAME:	ID:
220-01384-01	A	138401A	2.SC. 1
PROJECT:	DESIGNER:	FILE DATE:	NO.SHEETS:
T2000	RPS	24/07/98	1